



THE OFFICES

AT THE COLLECTION



Shea Properties.

MORE THAN A PLACE TO WORK

- Located in Oxnard with easy access from the Oxnard Blvd. or Vineyard Ave. off-ramps on Highway 101.
- The Collection's many sit-down restaurants are perfect for entertaining clients.
- A variety of casual eateries means you'll never again argue about where to go for lunch.
- Grab groceries at Whole Foods, a last minute gift at our retailers, or workout at 24-Hour Fitness.

- VIP Concierge Services will wash your car, pick up your coffee, and so much more.
- Convenient shared surface and structured parking just a short but awesome walk away.
- Near a variety of new housing options, from single-family homes to condos and apartments.
- LEED certified responsible building practices lead to operational cost savings.



A PLACE TO GET FIT, BEAUTIFUL, & ENTERTAINED

24 Hour Fitness Super Sport
Amazing Lash Studio
Activate Games *(coming soon)*
Bella Threading Studio
Bowlero
Century RiverPark 16 & XD
Color Me Mine
Club Pilates
European Wax Center
Jump 'N Jammin
LaserAway
Levity Live Comedy Club
M•A•C Cosmetics
Massage Envy Spa
Mero Games
Red Door Escape Room
TD Nail Studio
The Barber Shop
The Mighty Axe
Youthfill MD *(coming soon)*



A PLACE TO EAT EVERYTHING

After's Ice Cream
BB.Q Chicken (*coming soon*)
Bottle & Pint
Copper Blues Rock Pub & Kitchen
Five Guys Burgers & Fries
GEN Korean BBQ House
GOM Desserts
Gordo's Hot Chicken (*coming soon*)
Immigrant Son Cafe
It's Boba Time
IT'SUGAR
Kabuki Japanese Restaurant
King & Queen Cantina
Larsen's Grill
Lazy Dog Restaurant & Bar
Love Pho Café
Luna Grill

Menchie's Frozen Yogurt
Mong Q
Panera Bread
PizzaMan Dan's
Pokeworks (*coming soon*)
Ragamuffin Coffee Roasters
Red Robin
Settebello Pizzeria Napoletana
Silverlake Ramen
Starbucks
The Blend Superfood Bar
The Cheesecake Factory
Two Hands Corn Dogs
Wetzel's Pretzels (*coming soon*)
Whole Foods
Yard House



Lazy Dog Restaurant & Bar



Larsen's Grill



The Cheesecake Factory

A PLACE TO SHOP 'TIL YOU DROP

Carter's *(coming soon)*
Claire's
Cotton On
Ethan Allen
Heaven Sneaker Shop
H&M
Journeys
Lane Bryant
LOHO Love & Hope
Lovesac *(coming soon)*
Lululemon
Pacsun *(coming soon)*
Pandora
Pet Food Express
REI

Road Runner Sports
Sleep Number
Soma Intimates
Sunglass Hut
Target
The Closet Trading Co.
The Container Store
The Good Feet Store
Ulta
Urban Outfitters
Vans
Verizon Wireless
Victoria's Secret
Windsor
Zumiez *(coming soon)*



MINUTES FROM THE PACIFIC

2 PRIME OFFICE SPACES
AVAILABLE AT THE COLLECTION

RATE	\$2.55 FSG
TERM	5-10 YEARS
TIs	NEGOTIABLE
PARKING	4/1,000





SITE MAP

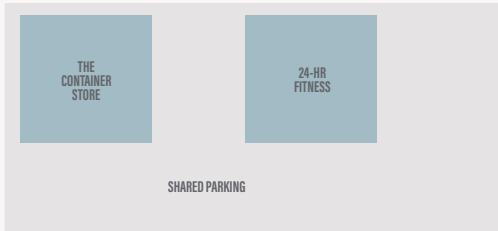
SHARED PARKING

- Restaurants
- Shops & More
- Available Office

CLYDE RIVER PLACE



TOWN CENTER DRIVE



DANVERS RIVER STREET

- A** 2750 PARK VIEW CT #240
10,254 SF - \$2.55 FSG
- B** 623 TOWN CENTER DR
1,409 SF - \$2.55 FSG

CLYDE RIVER PLACE



COLLECTION BOULEVARD



PARKVIEW COURT



SEAGLASS WAY

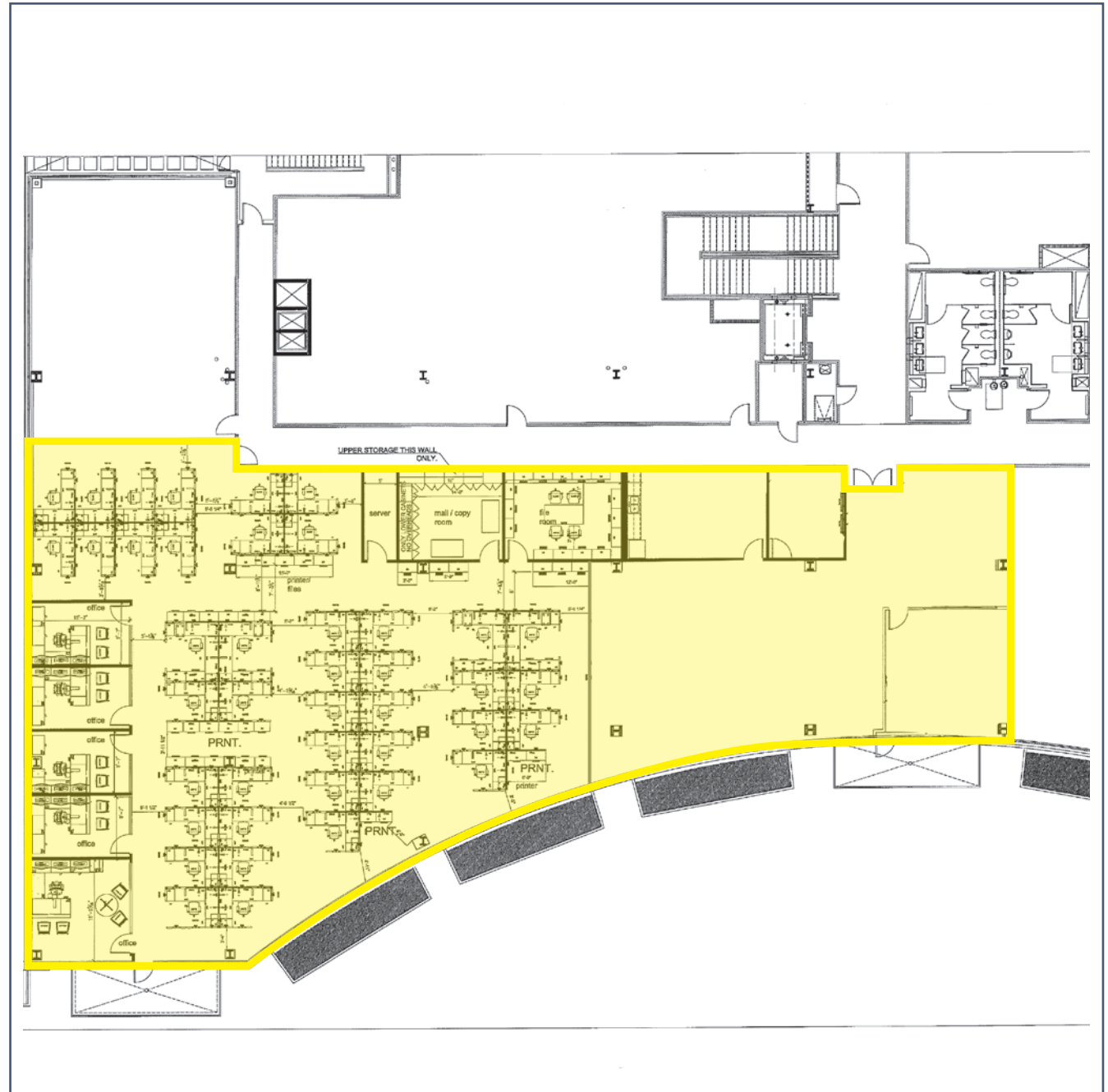
SHARED PARKING

SHARED PARKING

SHARED PARKING

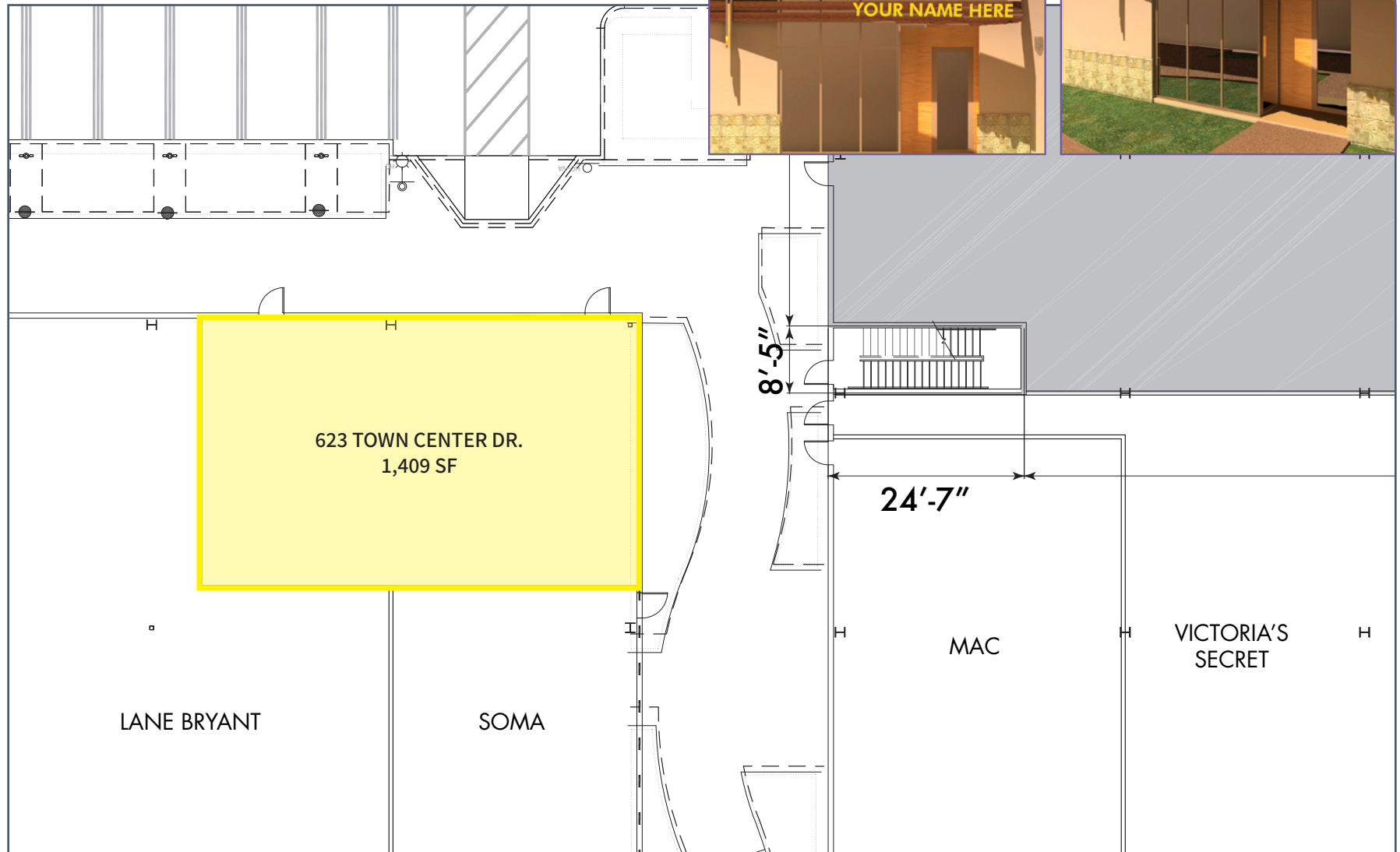
SPACE A

2750 Park View Court #240
10,254 RSF • \$2.55 FSG
Divisible to 3,218 RSF



SPACE B

623 Town Center Drive
1,409 SF • \$2.55 FSG



STRAIGHT FROM OUR CUSTOMERS

Don't just take our word for it; there's a reason why CBRE, Yardi, Good Sam and other firms have all found a home here.

"I enjoy the atmosphere, the music, a chance to walk around the center, the 24-hour security makes me feel safe, and the on-site 24-hour fitness is amazing. And, I'm loving the Annex."

Claudia Palermo
Loan Officer
Dignified Home Loans

"Working at The Collection is awesome! It is my home away from home. There are so many restaurants and stores to choose from and all of them are within walking distance from my office."

Judy May
Accounting Manager
Good Sam Enterprises, LLC



VIP CONCIERGE SERVICES

Office customers can take advantage of our VIP Concierge Services, exclusive benefits and opportunities.



24 Hour security services

In-office lunch delivery from any on-site restaurant

Car wash while you work

Hotel reservation assistance

Theatre reservations at Century RiverPark 16

Tee time reservations at local golf course
ATMs and banks within walking distance

Electric charging stations

Preferred business or personal dining reservations at Collection restaurants

Kid friendly parks for your family

Access to The Collection events: summer concerts, festivals, 5k's, tree lighting, Santa photos and more

Coming in 2025/2026 - Townplace Suites and Springhill Suites adjacent to The Collection

THE OFFICES

AT THE COLLECTION

CBRE

Tom Dwyer
(Lic. 01197938)
Senior Vice President
tom.dwyer@cbre.com
+1 805 288-4711

Bill Clark
(Lic. 01315127)
First Vice President
bill.clark@cbre.com
+1 805 288-4677

Mason Gray
(Lic. 02035347)
Associate
mason.gray@cbre.com
+1 805 288 4716

TheCollectionRP
Web • Facebook • Instagram • Twitter

© 2025 CBRE, Inc. All rights reserved. This information has been obtained from sources believed reliable, but has not been verified for accuracy or completeness. You should conduct a careful, independent investigation of the property and verify all information. Any reliance on this information is solely at your own risk. CBRE and the CBRE logo are service marks of CBRE, Inc. and/or its affiliated or related companies in the United States and other countries. All other marks displayed on this document are the property of their respective owners.

Photos herein are the property of their respective owners and use of these images without the express written consent of the owner is prohibited.