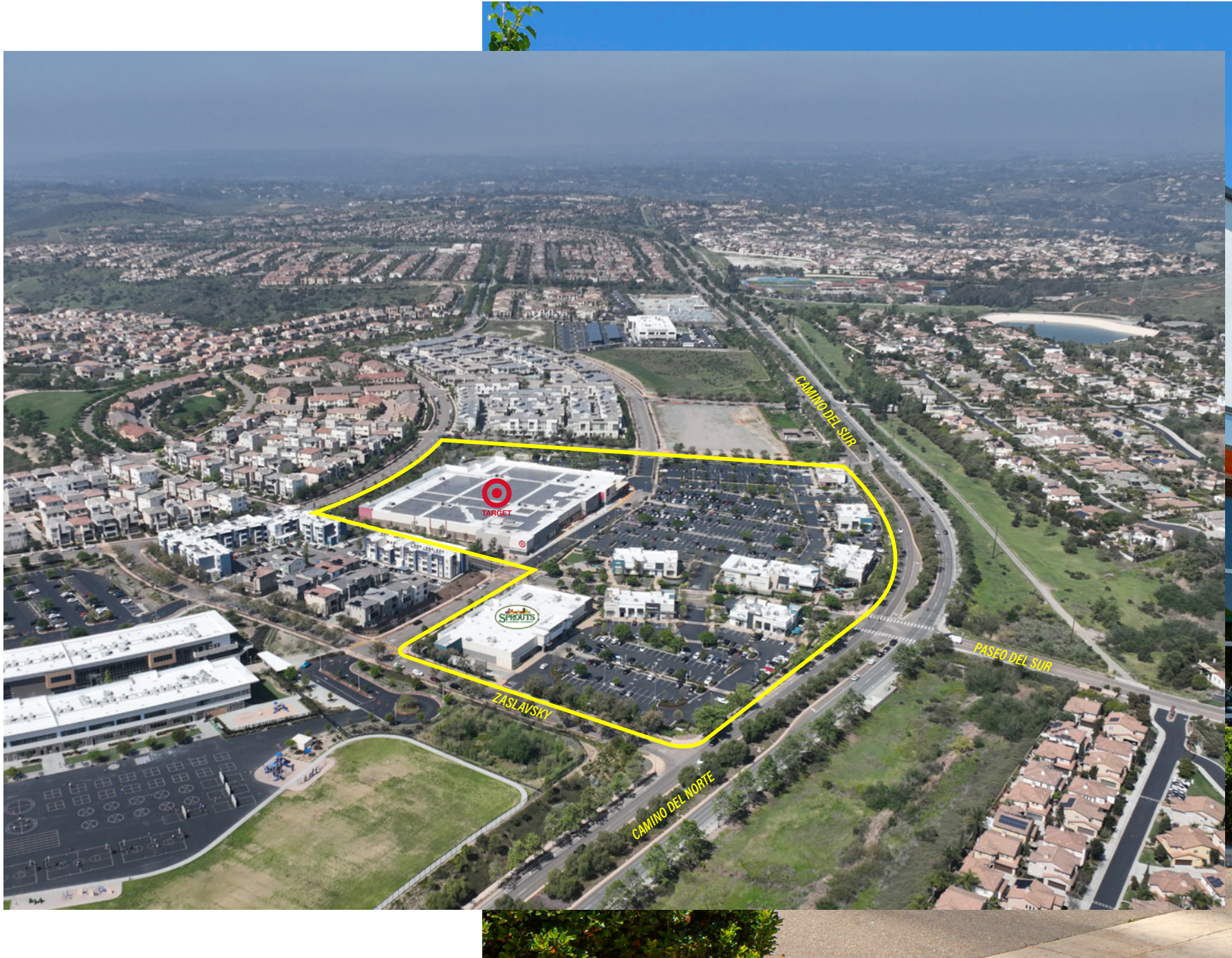




DEL
SUR
town center

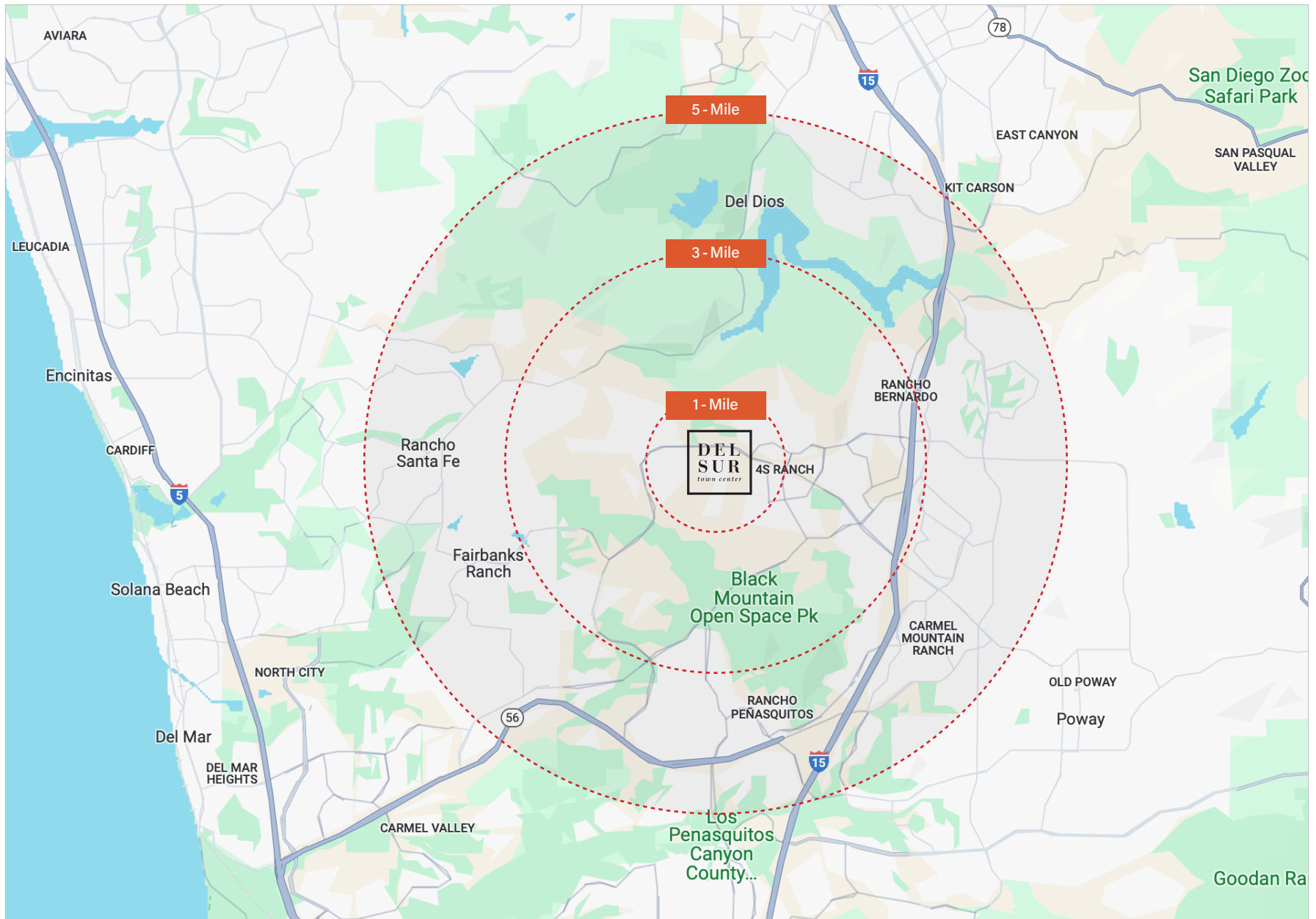
Shea Properties





WHY DEL SUR

Del Sur Town Center is a 209,043 SF retail plaza in the heart of the affluent Black Mountain Ranch community of northern San Diego, CA. Close to the 15 freeway, it's a convenient stop for residents and visitors driving northward or southward through San Diego County. The center's core customers are residents with an **average household income of \$188,041 within one mile**, as well as **18,206 households within a three-mile radius**, living in notable communities such as Rancho Bernardo. Major retailers Target and Sprouts at the center complement a mix of eateries and services, such as Piacere Mio, Chick-fil-A, Luna Grill, Burger Lounge, Choice Juicery, Orangetheory Fitness, and Starbucks.



KEY DEMOGRAPHICS

\$188,041

Avg. Household Income
Within 3 Miles

161,399

Population
Within 5 Miles

| | 1 - Mile | 3 - Mile | 5 - Mile |
|--------------------------|-----------|------------------|----------------|
| Population | 14,869 | 53,951 | 161,399 |
| Median Age | 34.6 | 37.3 | 42.2 |
| Number of Households | 4,906 | 18,206 | 59,139 |
| Average Household Income | \$202,132 | \$188,041 | \$179,548 |
| Daytime Population | 18,610 | 51,557 | 82,202 |

Source: esite Analytics, 2024



TENANTS

100% Chiro

Board & Brew

Burger Lounge

Chick-fil-A

Choice Juicery

Coastal Medical

Coldwell Banker West

Del Sur Ranch Dental

Gor Gai Thai

Lash Bar

Legacy Cleaners

Luna Grill

Nail Studio Del Sur

Orangetheory Fitness

Piacere Mio

Ponce's Mexican

The Salted Barber

Sprouts

Starbucks

Sushi Ren

Swami's Cafe

Target



NEWMARK

John Jennings (*LIC. 01215740*)
john.jennings@nmrk.com • (858) 875-5927

Justin Wessel (*LIC. 01946177*)
justin.wessel@nmrk.com • (858) 875-5929

ShopDelSurTownCenter
Web • Facebook • Instagram